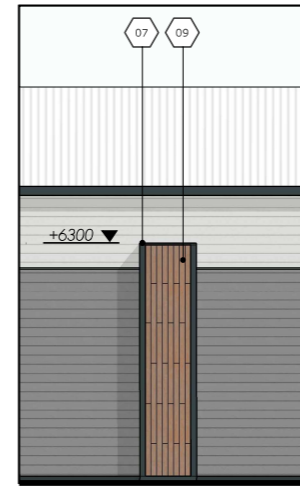


SOUTH ELEVATION (EXCERPT A)
1:100 @ A1



SOUTH ELEVATION (EXCERPT B)
1:100 @ A1

KEY

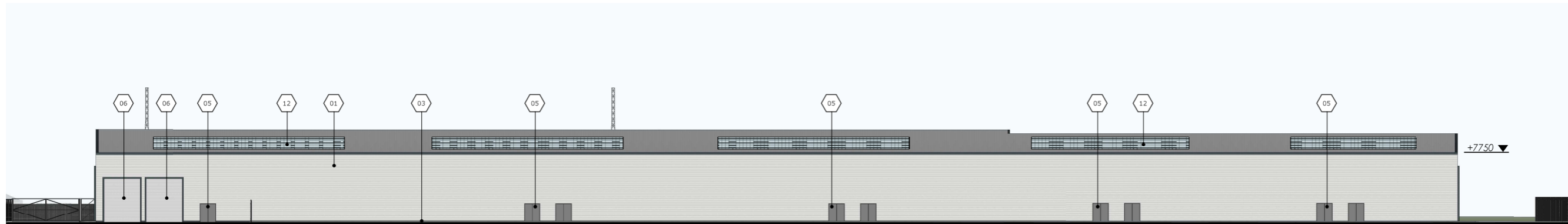
- 01 - PPC aluminium cladding panel
Profile: Trapezoidal
Colour: Dove grey (RAL 7035)
- 02 - PPC aluminium cladding panel
Profile: Trapezoidal
Colour: Basalt grey (RAL 7012)
- 03 - PPC Steel plinth
Colour: Grey
- 04 - Aluminium framed glazing system
Colour: Anthracite grey (RAL 7026)
- 05 - PPC steel door
Colour: Anthracite grey (RAL 7026)
- 06 - Roller shutter
Colour: Anthracite grey (RAL 7026)
- 07 - Aluminium flashing
Colour: Anthracite grey (RAL 7026)
- 08 - Aluminium canopy
Colour: Anthracite grey (RAL 7026)
- 09 - Pressure laminated timber plank system
- 10 - Horizontal trapezoidal timber solar shading panel
- 11 - External sign
- 12 - Photovoltaic panels
Layout subject to specialist design

Signage shown is indicative and will be sought through a separate advertisement application.

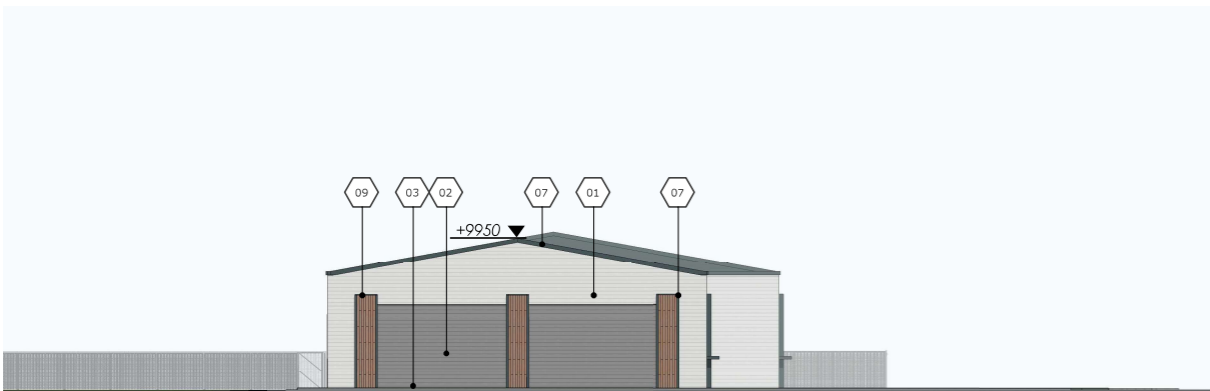
© Whittam Cox Architects - Disclaimer:
This drawing is copyright of WCC Group Ltd trading as Whittam Cox Architects, and shall not be reproduced or used for any other purpose without the written permission of the Architects. This drawing must be read in conjunction with all other related drawings, and documentation it is the contractor's responsibility to ensure full compliance with the Building Regulations. Do not scale from this drawing, use figure dimensions only. It is the contractor's responsibility to check and verify all dimensions on site. Any discrepancies to be reported immediately. If IN DOUBT ASK.
Materials not in conformity with relevant British or European Standards/Codes of practice or materials known to be deleterious to health & safety must not be used or specified on this project.



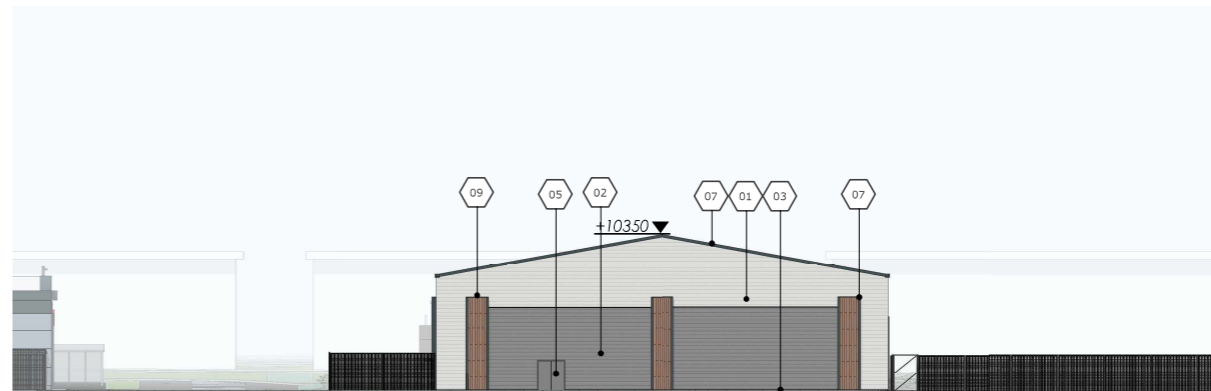
SOUTH ELEVATION
1:250 @ A1



Rear yard access Loading doors
NORTH ELEVATION
1:250 @ A1



WEST ELEVATION
1:250 @ A1



EAST ELEVATION
1:250 @ A1

01/2022	Issued for construction	WF
02/2022	Revised for construction	WF
03/2022	Revised for construction	WF
04/2022	Revised for construction	WF
05/2022	Revised for construction	WF
06/2022	Revised for construction	WF
07/2022	Revised for construction	WF
08/2022	Revised for construction	WF
09/2022	Revised for construction	WF
10/2022	Revised for construction	WF
11/2022	Revised for construction	WF
12/2022	Revised for construction	WF
13/2022	Revised for construction	WF
14/2022	Revised for construction	WF
15/2022	Revised for construction	WF
16/2022	Revised for construction	WF
17/2022	Revised for construction	WF
18/2022	Revised for construction	WF
19/2022	Revised for construction	WF
20/2022	Revised for construction	WF
21/2022	Revised for construction	WF
22/2022	Revised for construction	WF
23/2022	Revised for construction	WF
24/2022	Revised for construction	WF
25/2022	Revised for construction	WF
26/2022	Revised for construction	WF
27/2022	Revised for construction	WF
28/2022	Revised for construction	WF
29/2022	Revised for construction	WF
30/2022	Revised for construction	WF
31/2022	Revised for construction	WF
32/2022	Revised for construction	WF
33/2022	Revised for construction	WF
34/2022	Revised for construction	WF
35/2022	Revised for construction	WF
36/2022	Revised for construction	WF
37/2022	Revised for construction	WF
38/2022	Revised for construction	WF
39/2022	Revised for construction	WF
40/2022	Revised for construction	WF
41/2022	Revised for construction	WF
42/2022	Revised for construction	WF
43/2022	Revised for construction	WF
44/2022	Revised for construction	WF
45/2022	Revised for construction	WF
46/2022	Revised for construction	WF
47/2022	Revised for construction	WF
48/2022	Revised for construction	WF
49/2022	Revised for construction	WF
50/2022	Revised for construction	WF
51/2022	Revised for construction	WF
52/2022	Revised for construction	WF
53/2022	Revised for construction	WF
54/2022	Revised for construction	WF
55/2022	Revised for construction	WF
56/2022	Revised for construction	WF
57/2022	Revised for construction	WF
58/2022	Revised for construction	WF
59/2022	Revised for construction	WF
60/2022	Revised for construction	WF
61/2022	Revised for construction	WF
62/2022	Revised for construction	WF
63/2022	Revised for construction	WF
64/2022	Revised for construction	WF
65/2022	Revised for construction	WF
66/2022	Revised for construction	WF
67/2022	Revised for construction	WF
68/2022	Revised for construction	WF
69/2022	Revised for construction	WF
70/2022	Revised for construction	WF
71/2022	Revised for construction	WF
72/2022	Revised for construction	WF
73/2022	Revised for construction	WF
74/2022	Revised for construction	WF
75/2022	Revised for construction	WF
76/2022	Revised for construction	WF
77/2022	Revised for construction	WF
78/2022	Revised for construction	WF
79/2022	Revised for construction	WF
80/2022	Revised for construction	WF
81/2022	Revised for construction	WF
82/2022	Revised for construction	WF
83/2022	Revised for construction	WF
84/2022	Revised for construction	WF
85/2022	Revised for construction	WF
86/2022	Revised for construction	WF
87/2022	Revised for construction	WF
88/2022	Revised for construction	WF
89/2022	Revised for construction	WF
90/2022	Revised for construction	WF
91/2022	Revised for construction	WF
92/2022	Revised for construction	WF
93/2022	Revised for construction	WF
94/2022	Revised for construction	WF
95/2022	Revised for construction	WF
96/2022	Revised for construction	WF
97/2022	Revised for construction	WF
98/2022	Revised for construction	WF
99/2022	Revised for construction	WF
100/2022	Revised for construction	WF

CLIENT
Northumberland Estates
Developments

PROJECT
Wynyard Retail Park

TITLE
Proposed Building Elevations
Block C - Trade Units

DRAWING STATUS
Planning
DRAWN WF CHECKED DC
SCALE As indicated @ A1
DATE April 2022

Whittam Cox ARCHITECTS
Chesterfield / 01246 262061
London / 020 3388 0019
Leeds / 01134 682450
whittamcox.com

JOB NO. 200652 DRAWING NO. PL-13 REV J